

**D** Schneideisen

für metrisches ISO-Gewinde  
DIN 13

**E** Dies

for metric ISO-threads  
DIN 13

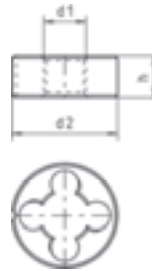
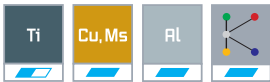
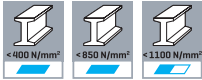
**I** Filiere

per filettatura metrica ISO,  
DIN 13

Schneideisen mit Schälanschnitt.

Dies with spiral point.

Filiere, imbocco corretto.



d1 mm	P mm	d2 mm	h mm	Code 5553 Art.-Nr.
M 2	0,4	16	5	0 5553002001.00
M 2,2	0,45	16	5	0 5553002201.00
M 2,3	0,4	16	5	0 5553002301.00
M 2,5	0,45	16	5	0 5553002501.00
M 2,6	0,45	16	5	0 5553002601.00
M 3	0,5	20	5	0 5553003001.00
M 3,5	0,6	20	5	0 5553003501.00
M 4	0,7	20	5	0 5553004001.00
M 4,5	0,75	20	7	0 5553004501.00
M 5	0,8	20	7	0 5553005001.00
M 6	1	20	7	0 5553006001.00
M 7	1	25	9	0 5553007001.00
M 8	1,25	25	9	0 5553008001.00
M 9	1,25	25	9	0 5553009001.00
M 10	1,5	30	11	0 5553010001.00
M 11	1,5	30	11	0 5553011001.00
M 12	1,75	38	14	0 5553012001.00
M 14	2	38	14	0 5553014001.00
M 16	2	45	18	0 5553016001.00
M 18	2,5	45	18	0 5553018001.00
M 20	2,5	45	18	0 5553020001.00
M 22	2,5	55	22	0 5553022001.00
M 24	3	55	22	0 5553024001.00
M 27	3	65	25	0 5553027001.00
M 30	3,5	65	25	0 5553030001.00

HSS-Gewindewerkzeuge  
HSS taps and dies  
HSS maschi e filiere

**D** Schneideisen

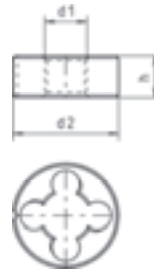
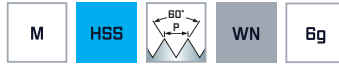
für metrisches ISO-Gewinde  
DIN 13, links

**E** Dies

for metric ISO-threads  
DIN 13, left hand

**I** Filiere

per filettatura metrica ISO,  
DIN 13, filettatura sinistra



d1 mm	P mm	d2 mm	h mm	Code 5554 Art.-Nr.
M 3	0,5	20	5	0 5554003001 00
M 3,5	0,6	20	5	0 5554003501 00
M 4	0,7	20	5	0 5554004001 00
M 4,5	0,75	20	7	0 5554004501 00
M 5	0,8	20	7	0 5554005001 00
M 6	1	20	7	0 5554006001 00
M 8	1,25	25	9	0 5554008001 00
M 9	1,25	25	9	0 5554009001 00
M 10	1,5	30	11	0 5554010001 00
M 12	1,75	38	14	0 5554012001 00
M 14	2	38	14	0 5554014001 00
M 16	2	45	18	0 5554016001 00
M 18	2,5	45	18	0 5554018001 00
M 20	2,5	45	18	0 5554020001 00
M 22	2,5	55	22	0 5554022001 00
M 24	3	55	22	0 5554024001 00

**D HSS-Cobalt Schneideisen**  
für metrisches ISO-Gewinde  
DIN 13

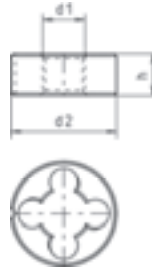
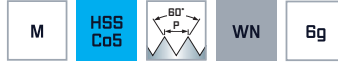
**E HSS-Cobalt dies**  
for metric ISO-threads  
DIN 13

**I Filiere HSS-Cobalto**  
per filettatura metrica ISO,  
DIN 13

Schneideisen mit Schälanschnitt, speziell für rostfreie Stähle.

Dies with spiral point, especially for stainless steels.

Filiere, imbocco corretto, particolarmente adatte per acciai inossidabili.



d1 mm	P mm	d2 mm	h mm	Code 5555 Art.-Nr.
M 2	0,4	16	5	0 5555002001 00
M 3	0,5	20	5	0 5555003001 00
M 4	0,7	20	5	0 5555004001 00
M 5	0,8	20	7	0 5555005001 00
M 6	1	20	7	0 5555006001 00
M 8	1,25	25	9	0 5555008001 00
M 10	1,5	30	11	0 5555010001 00
M 12	1,75	38	14	0 5555012001 00
M 14	2	38	14	0 5555014001 00
M 16	2	45	18	0 5555016001 00
M 18	2,5	45	18	0 5555018001 00
M 20	2,5	45	18	0 5555020001 00

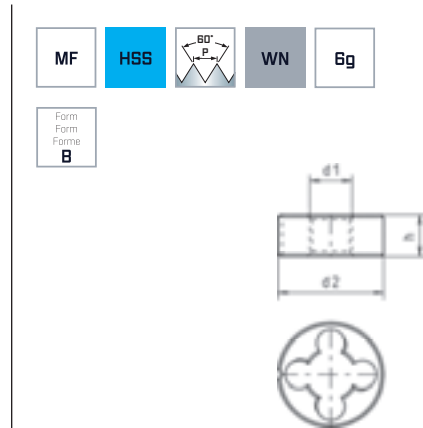
**D** **Schneideisen**  
für metrisches ISO-  
Feingewinde DIN 13

Schneideisen mit Schälanschnitt.



**E** **Dies**  
for metric ISO fine threads  
DIN 13

Dies with spiral point.



**I** **Filiere**  
per filettatura metrica ISO fine,  
DIN 13

Filiere, imbocco corretto.



d1 mm	P mm	d2 mm	h mm	Code 5613 Art.-Nr.
MF 4	0,5	20	5	0 5613009001 00
MF 5	0,5	20	5	0 5613011001 00
MF 6	0,5	20	5	0 5613013001 00
MF 8	0,5	25	9	0 5613014001 00
MF 6	0,75	20	7	0 5613015001 00
MF 8	0,75	25	9	0 5613017001 00
MF 10	0,75	30	11	0 5613019001 00
MF 8	1	25	9	0 5613022001 00
MF 9	1	25	9	0 5613023001 00
MF 10	1	30	11	0 5613024001 00
MF 11	1	30	11	0 5613025001 00
MF 12	1	38	10	0 5613026001 00
MF 14	1	38	10	0 5613027001 00
MF 16	1	45	14	0 5613029001 00
MF 18	1	45	14	0 5613030001 00
MF 20	1	45	14	0 5613031001 00
MF 10	1,25	30	11	0 5613037001 00
MF 12	1,25	38	10	0 5613038001 00
MF 14	1,25	38	10	0 5613039001 00
MF 12	1,5	38	10	0 5613040001 00
MF 14	1,5	38	10	0 5613041001 00
MF 16	1,5	45	14	0 5613043001 00
MF 18	1,5	45	14	0 5613044001 00
MF 20	1,5	45	14	0 5613045001 00
MF 22	1,5	55	16	0 5613046001 00
MF 24	1,5	55	16	0 5613047001 00
MF 26	1,5	55	16	0 5613049001 00
MF 30	1,5	65	18	0 5613052001 00

**D** **Schneideisen**  
für Whitworth-Rohrgewinde  
DIN ISO 228

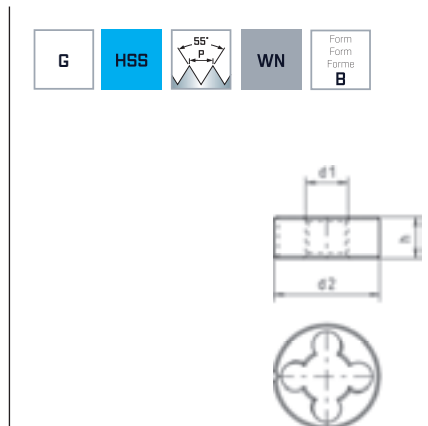
**E** **Dies**  
for whitworth pipe threads  
DIN ISO 228

**I** **Filiere**  
per filettatura whitworth per  
tubi DIN ISO 228

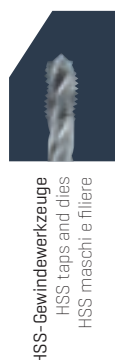
Schneideisen mit Schälanschnitt.

Dies with spiral point.

Filiere, imbocco corretto.



d1 inch	d1 mm	P Gg / 1"	d2 mm	h mm	Code 5673 Art.-Nr.
G 1/8"	9,73	28	30	11	0 5673016001 00
G 1/4"	13,16	19	38	10	0 5673020001 00
G 3/8"	16,66	19	45	14	0 5673024001 00
G 1/2"	20,96	14	45	14	0 5673028001 00
G 5/8"	22,91	14	55	16	0 5673032001 00
G 3/4"	26,44	14	55	16	0 5673034001 00
G 7/8"	30,20	14	65	18	0 5673036001 00
G 1"	33,25	11	65	18	0 5673038001 00



HSS-Gewindewerkzeuge  
HSS taps and dies  
HSS maschine filiere

**D** Schneideisen

für Unified Grobgewinde UNC  
ANSI B 1.1

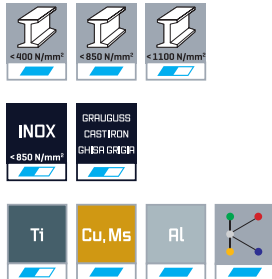
**E** Dies

for unified coarse threads  
UNC ANSI B 1.1

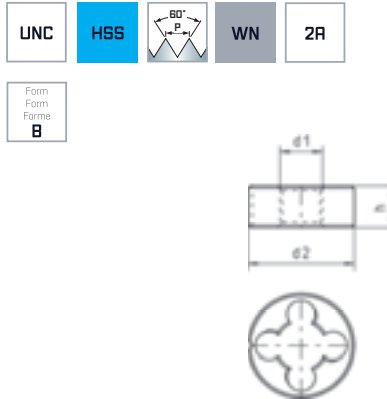
**I** Filiere

per filettatura americana UNC  
grossa ANSI B 1.1.

Schneideisen mit Schälanschnitt.



Dies with spiral point.



Filiere, imbocco corretto.



d1 inch	d1 mm	P Gg / 1"	d2 mm	h mm	Code 5753 Art.-Nr.
Nr. 1	1,85	64	16	5	0 5753001001 00
Nr. 2	2,18	56	16	5	0 5753002001 00
Nr. 3	2,52	48	16	5	0 5753003001 00
Nr. 4	2,85	40	16	5	0 5753004001 00
Nr. 5	3,18	40	20	5	0 5753005001 00
Nr. 6	3,51	32	20	7	0 5753006001 00
Nr. 8	4,17	32	20	7	0 5753008001 00
Nr. 10	4,83	24	20	7	0 5753010001 00
Nr. 12	5,49	24	20	7	0 5753012001 00
1/4"	6,35	20	20	7	0 5753020001 00
5/16"	7,94	18	25	9	0 5753022001 00
3/8"	9,53	16	30	11	0 5753024001 00
7/16"	11,11	14	30	11	0 5753026001 00
1/2"	12,7	13	38	14	0 5753028001 00
9/16"	14,29	12	38	14	0 5753030001 00
5/8"	15,88	11	45	18	0 5753032001 00
3/4"	19,05	10	45	18	0 5753034001 00
7/8"	22,23	9	55	22	0 5753036001 00
1"	25,4	8	55	22	0 5753038001 00

**D** Schneideisen

für Unified Feingewinde UNF  
ANSI B 1.1

**E** Dies

for unified fine threads UNF  
ANSI B 1.1

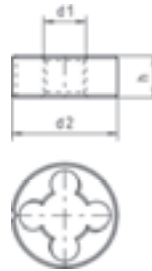
**I** Filiere

per filettatura americana UNF  
fine ANSI B 1.1.

Schneideisen mit Schälanschnitt.

Dies with spiral point.

Filiere, imbocco corretto.



d1 inch	d1 mm	P Gg / 1"	d2 mm	h mm	Code 5773 Art.-Nr.
Nr. 1	1,85	72	16	5	0 5773001001 00
Nr. 2	2,18	64	16	5	0 5773002001 00
Nr. 3	2,52	56	16	5	0 5773003001 00
Nr. 4	2,85	48	16	5	0 5773004001 00
Nr. 5	3,18	44	20	5	0 5773005001 00
Nr. 6	3,51	40	20	5	0 5773006001 00
Nr. 8	4,17	36	20	7	0 5773008001 00
Nr. 10	4,83	32	20	7	0 5773010001 00
Nr. 12	5,49	28	20	7	0 5773012001 00
1/4"	6,35	28	20	7	0 5773020001 00
5/16"	7,94	24	25	9	0 5773022001 00
3/8"	9,53	24	30	11	0 5773024001 00
7/16"	11,11	20	30	11	0 5773026001 00
1/2"	12,7	20	38	10	0 5773028001 00
9/16"	14,29	18	38	10	0 5773030001 00
5/8"	15,88	18	45	14	0 5773032001 00
3/4"	19,05	16	45	14	0 5773034001 00
7/8"	22,23	14	55	16	0 5773036001 00
1"	25,4	12	55	16	0 5773038001 00
1 1/8"	28,58	12	65	18	0 5773040001 00

HSS-Gewindewerkzeuge  
HSS taps and dies  
HSS maschi e filiere